

2020 & EARLIER 8H TRANSMITTER SOFTWARE

TemPRO - The user friendly software for TempIR

TemPRO is the software with which all user-configurable parameters in TempIR can be reached. TemPRO is compatible with Windows 2000, 7 (32/64) and Windows 8 (contact factory for installation). The software lets you prepare configurations, save them as files and transfer them to any TempIR transmitter. The program is menu-driven and easy to learn. In addition, TemPRO configures all products of the Temp family.

Software Features

Engineered Units

- Ability to use engineering units for directly specifying custom ranges.
- Can be changed instantly by re-arranging the engineering unit.

Standard Linearization

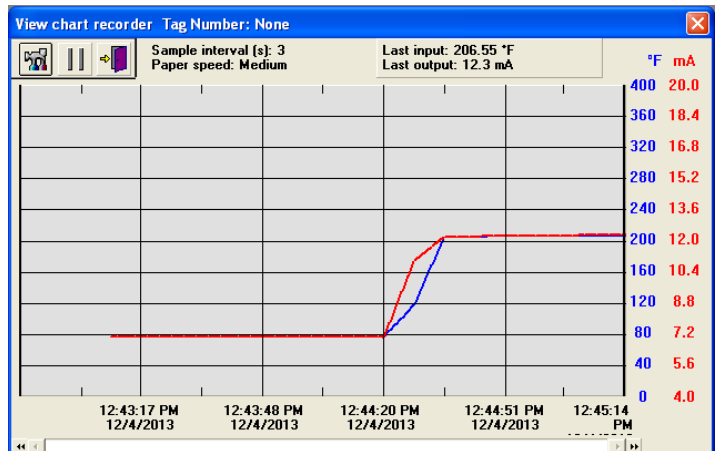
- Pt 100 (a=3850; 3902; 3916), Pt 1000 (3850), Ni 100, Ni 120, Ni 1000, Cu 10. T/C B, C, E, J, K, L, N, R, S, T, U

Customized Linearization

- Utilized by entering 9 data pairs.

Datapairs

- Up to 9 datapairs can be entered to describe the input signal.
- Up to 4 datapairs can be entered to describe the cold junction compensation of a thermocouple.



Utilities

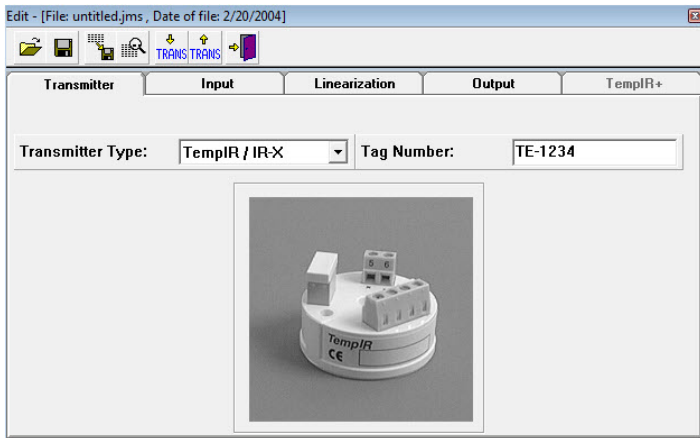
- Field calibration permits adjustment of the transmitter in one or two points. This is a system error correction - eliminating sensor error and transmitter drift.
- For this function the sensor / transmitter is subjected to a calibration source (i.e. oven).
- °C, °F are selectable at any time.
- Instrument Calibration - stepped 4mA / 12mA / 20mA for loop checks.

Software Requirements

- TemPRO is a Windows program.
- Runs on a PC with Windows 2000, 7 (32/64) and Windows 8.

File Handling

- Configuration files can be stored for future use.
- TemPRO has the ability to save configuration data in ASCII text format.



Documentation

- Configuration protocols can be printed for future use.
- Protocols are time stamped for traceability and furnished with user space for calibration notes.
- Up to 15 alpha numeric characters, for documentation purposes can be stored in the configuration file. (In tag number field)

On Screen Indication

- TemPRO will show the measuring values on screen in real time.
- Updating time is user selected.
- Values are displayed in numerals, meters, or bargraphs.

