

CAROLINA TWIST

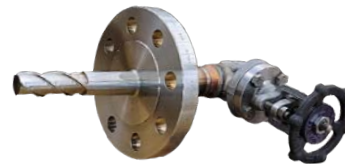
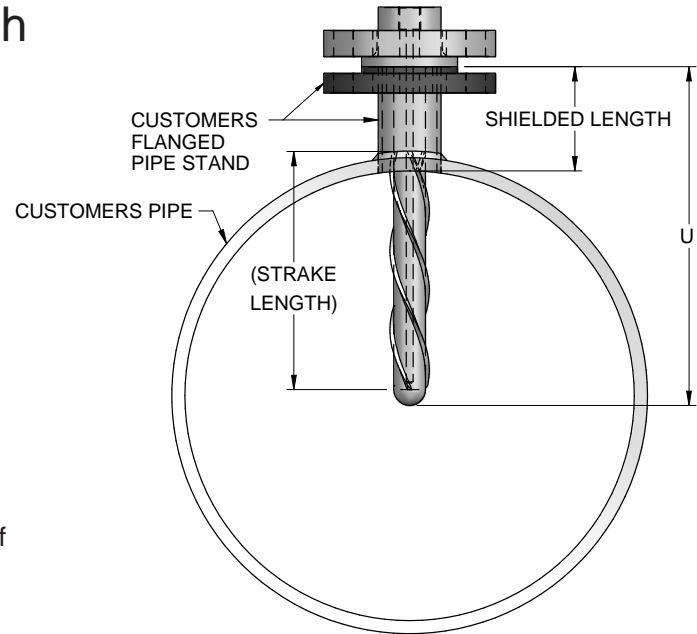
Thermowell Immersion Length Limited by Wake Frequency Calculation Results?

Although outside the scope of ASME 19.3TW, straked thermowells can increase the velocity at which resonance occurs while diminishing wake frequency induced vibration. Best suited for clean, non-erosive, non-corrosive gas applications where the design constraint is a projected failure due to wake frequency.

Carolina Twist designs are typically provided with a rounded tip and do not require any reconfiguration of the thermowell nozzle to install. Steady state stress and pressure calculations can be provided to help guide your design judgment.

JMS will generate a drawing specific to your requirement.

Call JMS today. We can help!



Also Available for
Sample Probes!