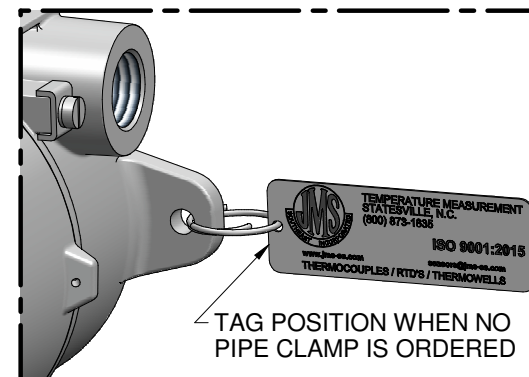


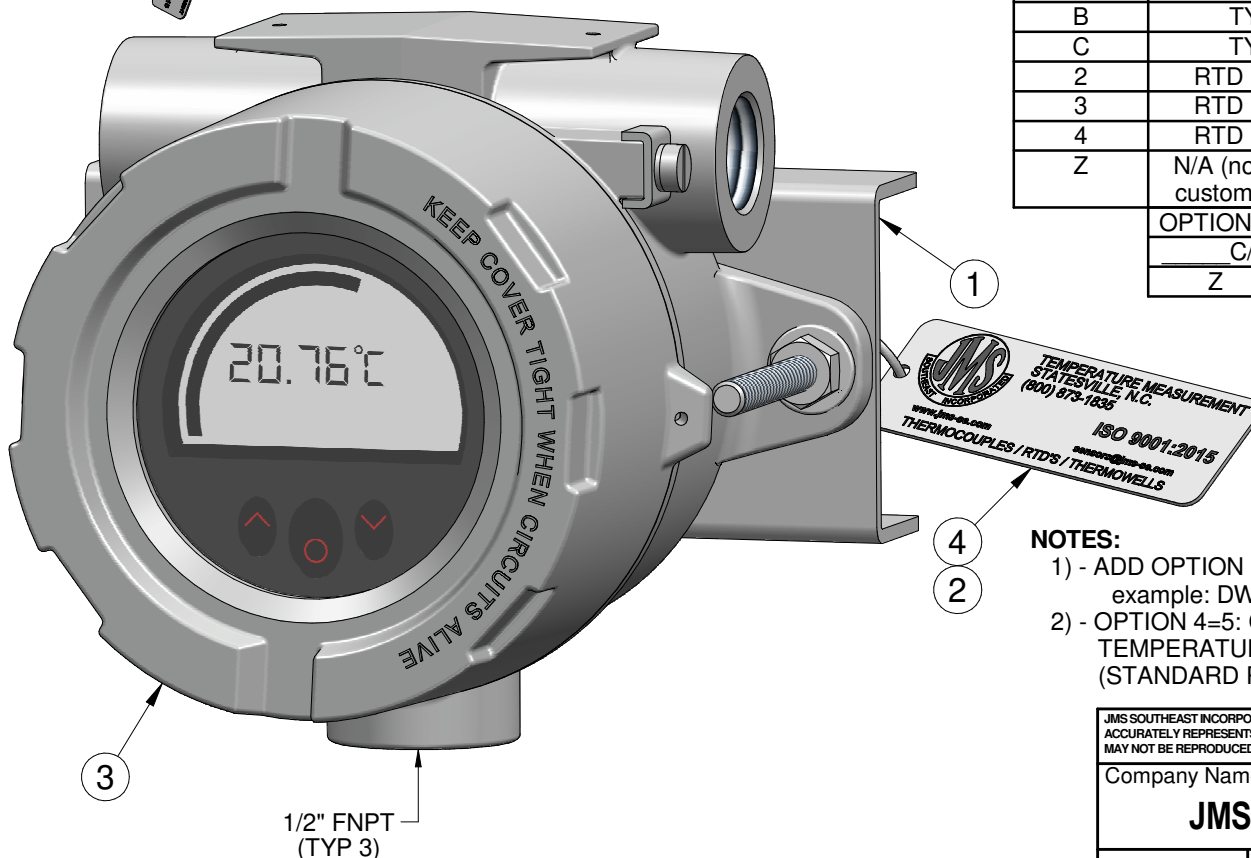
OPTION 1	HOUSING / HEAD MATERIAL
A	ALUMINUM
S	STAINLESS STEEL

OPTION 2	SENSOR TYPE
J	TYPE J
K	TYPE K
T	TYPE T
E	TYPE E
N	TYPE N
R	TYPE R
S	TYPE S
B	TYPE B
C	TYPE C
2	RTD (2 WIRE)
3	RTD (3 WIRE)
4	RTD (4 WIRE)
Z	N/A (not specified, customer to span)



OPTION 3	SPAN RANGE
C/F	CUSTOMER TO SPECIFY INCLUDING C/F UNIT
Z	N/A (not specified, customer to span)

OPTION 4	CHOOSE ALL THAT APPLY
B	PIPE-MOUNT BRACKET INCLUDED
5	CALIBRATION & CERTIFICATE INCLUDED (SEE NOTE 2)



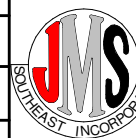
NOTES:

- 1) - ADD OPTION SUFFIXES TO CREATE JMS PART #
example: DWG22777AK0-500FB
- 2) - OPTION 4=5: CALIBRATE AT SPECIFIC POINTS PROVIDING MEASURED TEMPERATURE INPUT, OUTPUT, AND ERROR IN DEGREES.
(STANDARD POINTS ARE 0%, 50%, AND 100% OF SPAN RANGE)

JMS SOUTHEAST INCORPORATED CERTIFIES THIS DRAWING IS IN ACCORDANCE WITH JMS SOUTHEAST INCORPORATED ENGINEERING SPECIFICATIONS AND ACCURATELY REPRESENTS THE EQUIPMENT FURNISHED. THIS DRAWING IS THE SOLE PROPERTY OF JMS SE, AND MUST BE RETURNED UPON DEMAND IT MAY NOT BE REPRODUCED NOR THE INFORMATION CONTAINED THEREIN USED WITHOUT THE WRITTEN PERMISSION OF JMS SOUTHEAST INCORPORATED

Company Name: JMS INDICATING TRANSMITTER		Project Name:	
Reference Data:	Drawing #: 22777X	ERF #: 7908	
		Rev 07 pg 1 of 1	

TOLERANCE TABLE: PROBE (L): 0-48" ±1/8" 48"-144" ±1/4" 144" + -1" / +2" WIRE (L): <24" -1/2" / +1" >24" -1/2" / +2" PROT. TUBE (P&U): ±1/4" FRACTIONAL DIM: ±1/8" DECIMAL DIM: XX ±0.10" XXX ±0.010" XXXX ±0.005" UNLESS STATED OTHERWISE	Approvals	Initials	Date
	Drafting		
	Engineering		
	Second		



JMS SOUTHEAST, INC.
 Temperature Measurement
 105 Temperature Lane
 Statesville, North Carolina 28677
 Phone: (704) 873-1835
 Fax: (704) 878-6166
 www.jms-se.com
 Email: sensors@jms-se.com

REV. 4-10-2009

#	DESCRIPTION
1	BRACKET, 1 1/2" - 2" PIPE, SS
2	CIRCLE COTTER, SS
3	JMS INDICATING TRANSMITTER, HART, 4-20mA, EXPLOSION PROOF GLASS, IP66, NEMA 4X, THREE - 1/2" FNPT PORTS, ALUMINUM OR STAINLESS STEEL, SILICONE O-RING, RATED -40°C TO 85°C
4	JMS TAG, SS